



# comprex»

SCU – Stationary Comprex® Unit



## Impulses that inspire.

We offer a cost-saving and sustainable alternative for cleaning a wide variety of piping systems.

The complex® process operates through a mechanical approach, harnessing pulsed compressed air and a minimal water usage.

Whether it's loose sediments, recently deposited dirt, tenacious germs like legionella, or strongly adhering grime, our innovative approach ensures a thorough cleaning process.



Experience the impressive cleaning effect of our patented complex® cleaning process in our video.





comprex<sup>®</sup>  
Patented cleaning technology



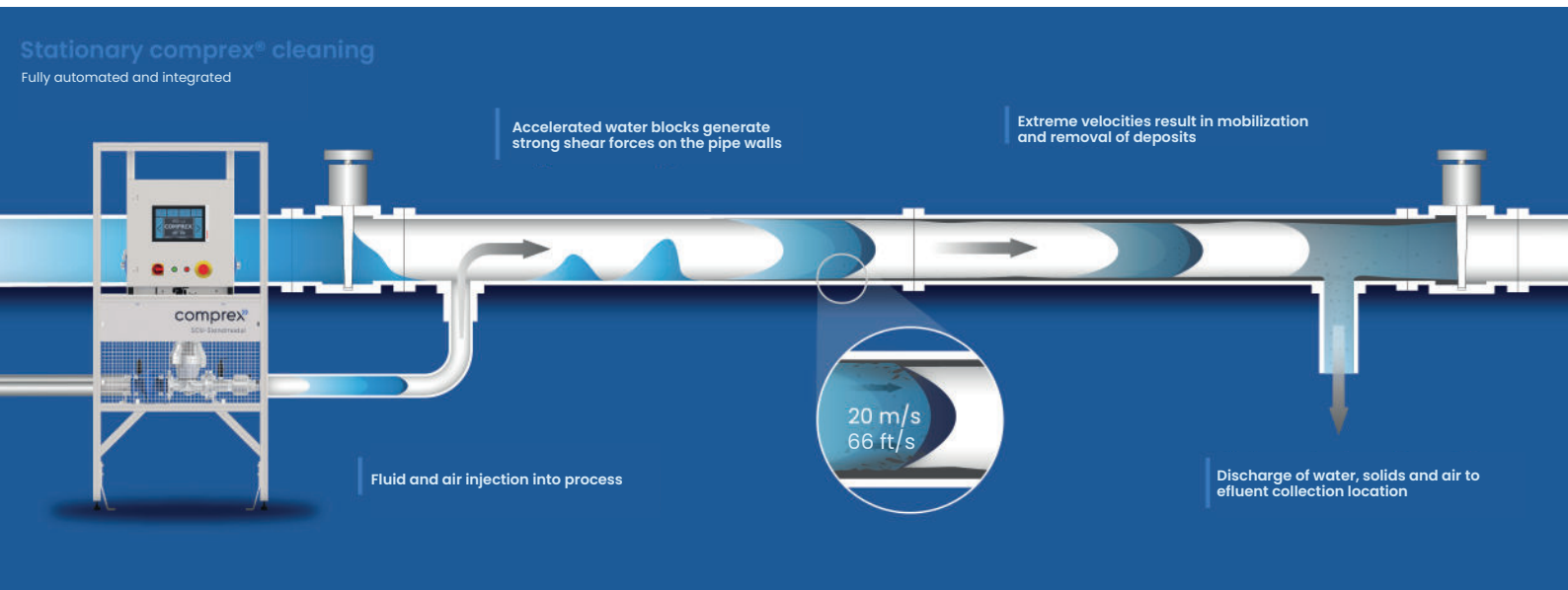
www.comprex.de

Novacel



Impulses that inspire

# Integration of SCU



## 01 The problem

Conventional cleaning methods rely on flow velocities to achieve the needed shear forces and/or the use of chemicals to remove deposits from the surface of pipelines and piping components.

## 03 The solution

The complex® technology accelerates water slugs to a maximum flow velocity of 65 feet per second in less than 0.1 seconds. This rapid acceleration results in an extraordinary increase in wall shear stress compared to steady flow methods. complex® outperforms traditional water flushing by up to 1,000 times the cleaning forces, all while maintaining lower pressures than conventional methods.

## 02 The consequence

The piping system's geometry severely limits the attainment of necessary flow velocities, leading to prolonged flushing times. Consequently, there's a substantial increase in water usage, extended downtimes, and elevated expenses for effluent treatment. Additionally, the excessive use of chemicals exacerbate these challenges while yielding subpar results.

## 04 The result

complex® reduces water consumption and therefore reduces wastewater volume. Less volume required means less energy usage for tempered cleaning fluid applications, yielding additional savings, minimizing downtimes, all while achieving maximal cleaning.

The innovation from comprex®

## SCU- Stationary comprex® Unit

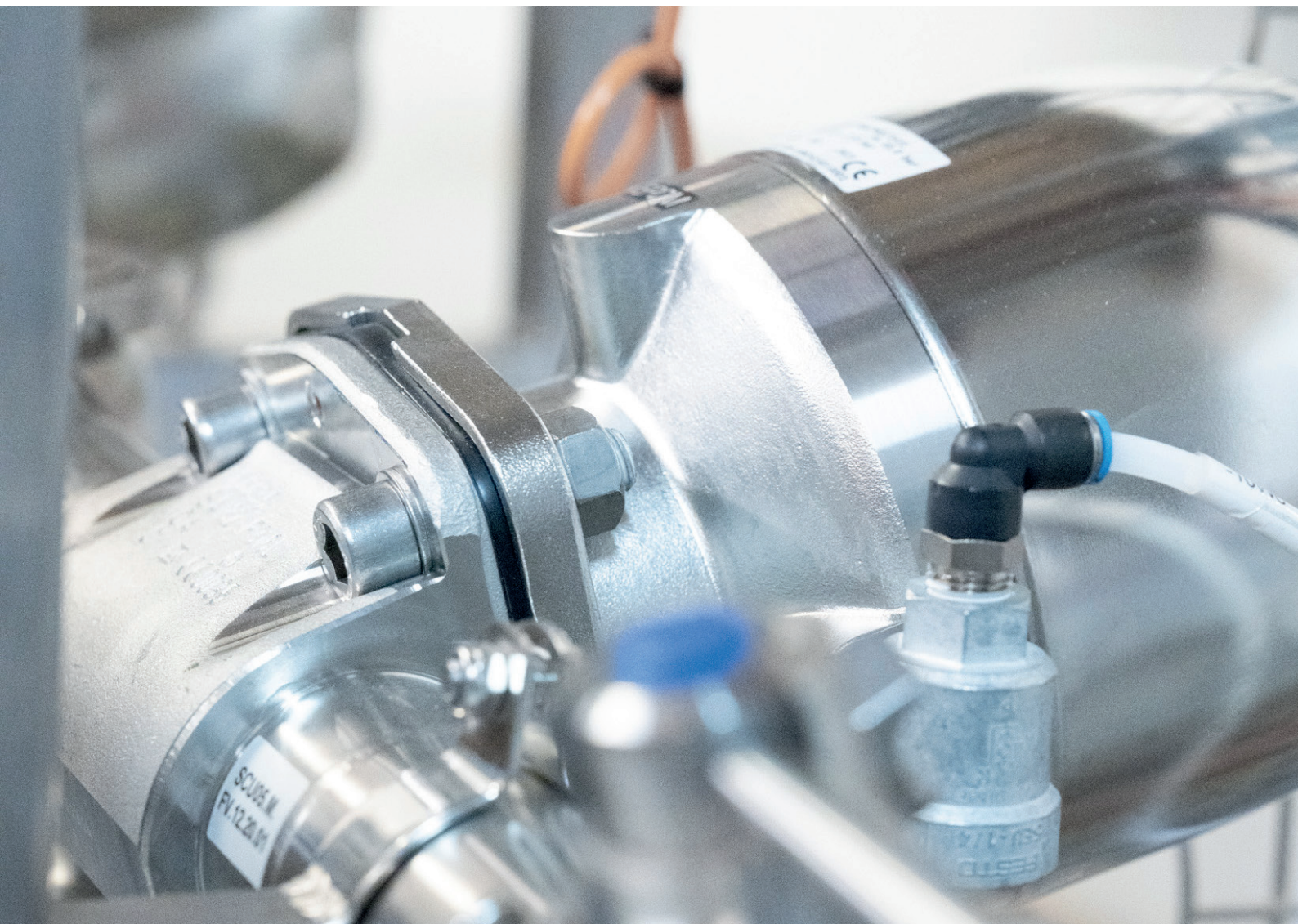
Bring the concept of preventive maintenance to your product pipelines using less resources and more cleaning power

### Advantages at a Glance

- Profound cost savings implications
- Up to 97% Water savings
- Up to 80% Downtime reduction
- Reduce and potentially eliminate chemical usage
- Reduce and potentially eliminate heating costs
- Reduced effluent treatment costs

### Applications

- Food and Beverage
- Consumer Goods
- Industrial
- Pulp & Paper
- Pharmaceuticals
- Municipal
- Heat Exchangers
- Injection Molding



comprex® SCU

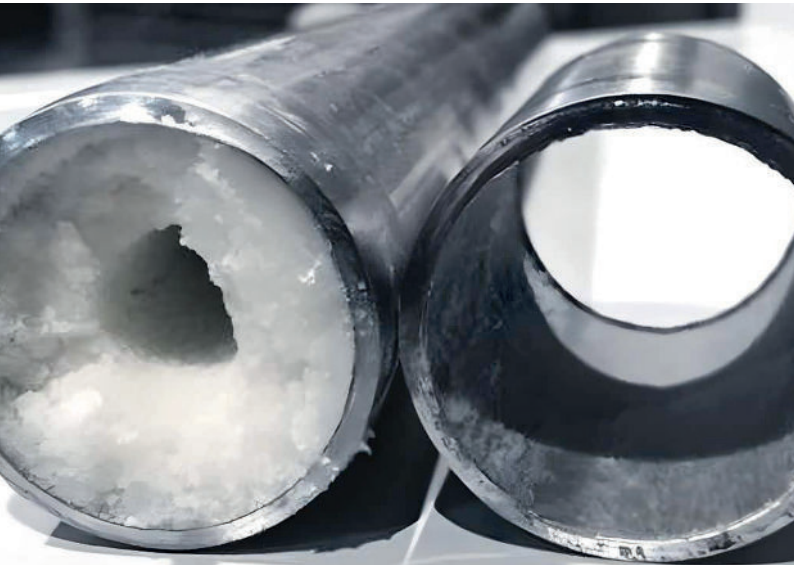
## Why invest in comprex® SCU?

- Bring the concept of **preventive** maintenance to your product pipelines through the powerful comprex® cleaning technology.
- comprex® SCU is **easy** to install on your product pipelines and does not require huge investments
- Reduce plant downtime, **improve** production output and product rejects
- **Save** costs through less energy required to transport your product
- **Eco-friendly**, with savings of about 90% in water and cleaning time compared to water rinsing. Cleaning is carried out using just **water and air**, without chemicals
- Prevent **costly** maintenance, manual cleaning, or pipeline replacements
- Ensure high product quality and thus **compliance** with your stringent quality standards



comprex® – The patented cleaning process

**By using only air and water, comprex is able to produce unparalleled results.**



The proof is in the results.

**20 m/s**  
**(70 km/h)**

Maximum Speed of  
Pulses



Click [here](#) to see how comprex saves more than 90% water and time.

**>250**

Industrial service  
projects per year

**>27**

Years of  
expertise



## Contact us!

[info@hammann-engineering.de](mailto:info@hammann-engineering.de)

Varun Kuriakose  
Global Product Manager  
Tel. +49 6346 38084-74

Always searching for the next  
innovation.



**Hammann Engineering GmbH**  
Zweibrücker Straße 13  
76855 Anweiler am Trifels  
Germany  
Tel. +49 6346 3004 - 74  
[www.comprex.de/en/engineering/](http://www.comprex.de/en/engineering/)