



**HAMMANN**  
ENGINEERING

## Stationary Complex® Unit SCU

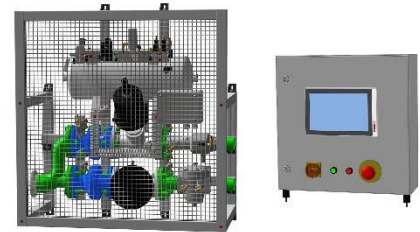


Figure 1: Overview of SCU variants

## Cleaning industrial systems, plant and equipment using a stationary complex® unit

### Task

- Remove deposits and soiling from industrial systems, pipelines, heat exchangers / heat exchangers, cooling systems, cooling lubricant lines or equipment using the Complex process®
- Use integrated in the system to be cleaned
- Frequent and spontaneous cleaning requirements
- Automated control possible by integrating into the customer's control system (PLC)

### Technical data

- Universally installable due to compact dimensions (Figure 1, Figure 2 and Figure 3)
- Dimensions can be adapted to customer requirements
- The control cabinet and SCM can be installed together or separately from each other
- External gas supply optionally via existing compressed air network, compressor or inert gas
- External water supply (process/drinking water)
- External power supply (230 / 400 V AC)
- Control system with Complex® software or integrated into the control system of the overall system

### Cleaning with the Complex® process

- Efficient cleaning through the controlled use of air and water
- Cleaning is possible at any time and spontaneously
- purely mechanical cleaning, no chemicals
- Optimized disposal costs thanks to low wastewater volumes and chemical-free cleaning



Figure 2: SCU as a wall module in the installed state with protective grille



Figure 3: Stand-alone version of the SCU



Figure 5: Further views of the SCU (top left: Combination control cabinet for controlling two wall modules; top right: stand-alone version; bottom left: Flange connections; bottom right: Example for Compress software)

# COMPREX®

SCU\_status: 03-2023